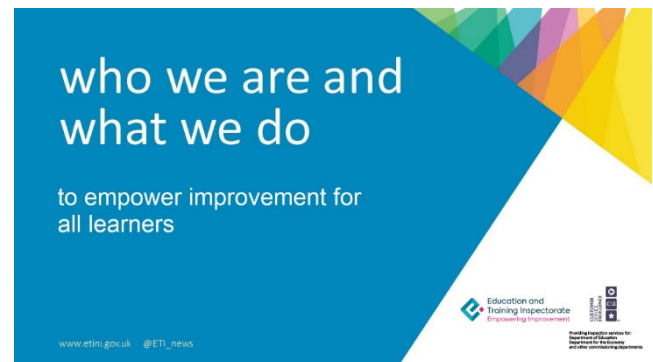


## ETI UPDATE: September 2024 – January 2025

To all those who work in education,

Welcome back to all teachers, tutors, lecturers, leaders and learners as the academic year 2024/25 begins. We at ETI are keen to share with you our exciting programme of work which includes inspection, evaluation and dissemination. Our Programme of Work is aligned to our Quality Improvement Strategy to ensure it provides a balanced service which meets the needs of the education system, including all learners.



This strategy was devised in partnership with all our stakeholders.



We thank all of the teachers, tutors, lecturers, leaders, parents/carers, children and young people who have supported the piloting of the new model of inspection throughout the last academic year. We published our [New Framework for Inspection](#), the 'Empowering Improvement Framework', in May 2024. It has been informed by, and co-designed with, schools and organisations, resulting in a new inspection process underpinned by our revised vision and mission. The document details the key changes to the inspection process and will be kept under ongoing review across the first year of implementation.

We thank those working in schools and early years settings who have supported us in our evaluation work on the Statutory Assessment (Statementing) Process and have facilitated our discussions with parents/carers and the children and young people. This work will be disseminated in the first term so look out for an invitation to the dissemination event.



Further details on the ETI’s Programme of Work for September 2024 to January 2025 can be found [here](#).

If there is an additional area of your work which you would like us to see, you can request a visit by using the template available at [District/Specialist visit request form](#).

If you have any queries regarding this Programme of Work, please contact the Inspection Services Team at [eti@education-ni.gov.uk](mailto:eti@education-ni.gov.uk) or on 028 9127 9726 or you can talk to your District Inspector.